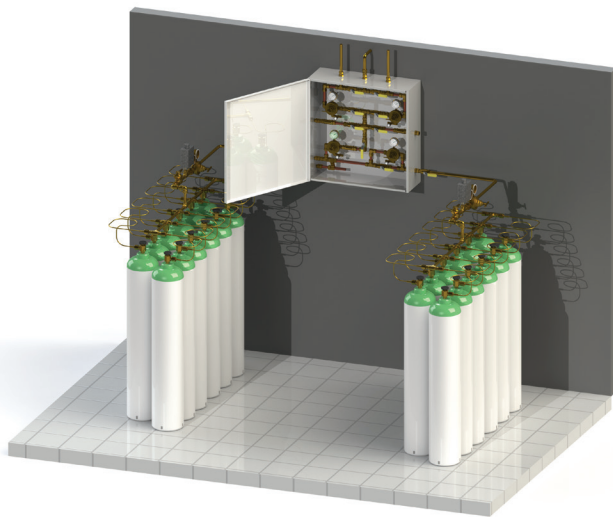


ON<sub>2</sub> is a world leader in the design, manufacture and installation of medical oxygen supply systems. The equipment has been developed over a number of years to deliver their full rated capacity continuously and reliably. ON<sub>2</sub> Distribution Panels are built to CSA standards, codes and regulations in accordance with CSA Standards CSA Z10083-08, CSA/CAN Z7396.1 "Non-flammable Medical Gas Piping Systems". Our Oxygen Distribution Panel is designed to provide a continuous oxygen supply for medical applications. If the supply in use is unable to provide the required oxygen demand, the panel automatically draws on the next alternate supply. Each panel can use up to 4 sources of supply; Primary, Secondary, and a Split Reserve. Our manifolds are custom sized to provide 48 hrs for each backup supply based on the hospital's average demand.



*Distribution Panel with Manifold*

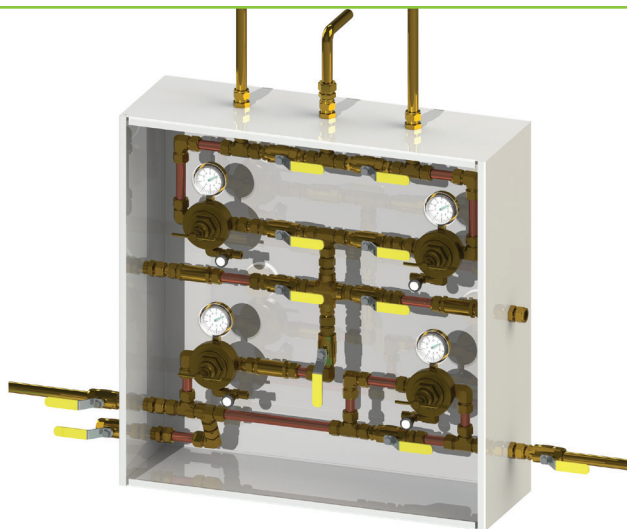
## Custom Manifolds

- Manifolds include a high pressure shut-off valve, pressure switch, two-stage pressure regulator with gauges, relief valve and check valve
- Banks can be split to allow for replacing of smaller batches of cylinders when depleted
- Relay contacts indicate Secondary low, Reserve in use, Reserve low on remote alarm panel
- Pigtails are gas specific with filters and check valves at each end



*Typical LAYOUT of Distribution Panel and manifold using an OC-15 System*

**PROVIDING A SOLUTION TO YOUR OXYGEN NEEDS FOR OVER 25 YEARS**



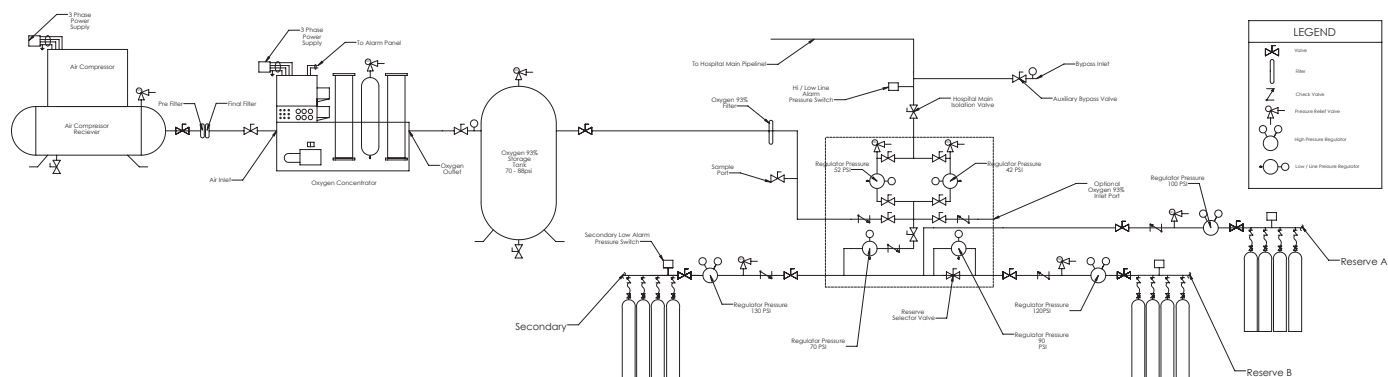
## Specifications and Dimensions

1/2" Panel	3/4" Panel	3/4" High Flow
400 LPM Up to 4 sources 30" X 30" X 10"	700 LPM Up to 4 sources 30" X 30" X 10"	1100 LPM Up to 5 sources 36" X 36" X 10"

- Enclosed in a steel cabinet
- Dual line pressure regulators
- Temporary bypass port
- Regulator serviceable in cabinet
- Cascading regulator determines source to feed

## ADVANTAGES OF AN ON<sub>2</sub> DISTRIBUTION PANEL

- Used with up to 4 sources of supply; 5 with High Flow panel
- Designed to automatically switch between Primary, Secondary and Split Reserve
- OC is Primary, liquid or cylinders are Secondary, and cylinders are always the Reserve
- Low Maintenance, due to no moving electrical parts
- Best in Class Regulators; VICTOR or REGO
- BARKSDALE pressure switches monitor bank pressure to indicate alarm conditions
- Each source is equipped with pressure regulator, gauge, relief valve and check valve
- "Emergency Bypass Port" allows connection of an external supply for servicing



**PROVIDING A SOLUTION TO YOUR OXYGEN NEEDS FOR OVER 25 YEARS**