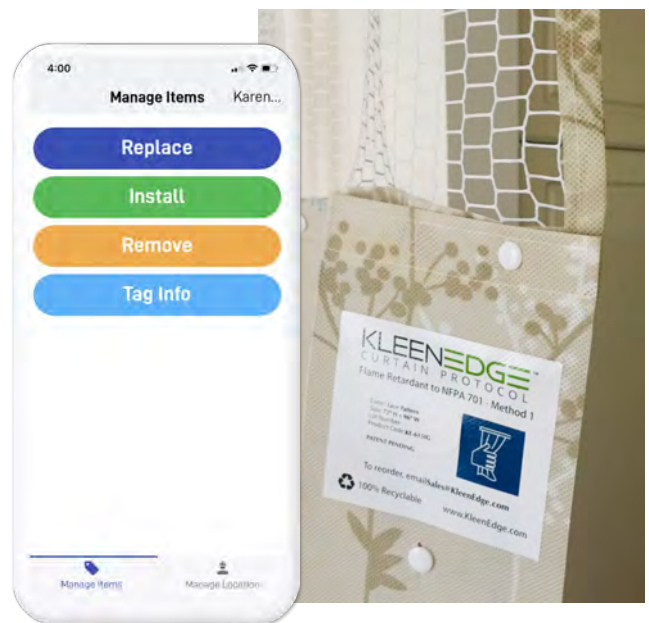


Reduce Costs and Enhance Operational Efficiencies with Smart Curtain Technology

Everyone touches the privacy curtain and studies have shown that they are often contaminated after just two weeks. To ensure patient and staff safety it is imperative that exchange protocols can be monitored and validated.

KleenEdge curtains with NFC tags offer a curtain monitoring and management solution that helps simplify operations and reduces curtain acquisition, inventory & labor costs. Our platform ensures real-time data on one of the top high risk touchpoints in the patient zone.

- Reduce curtain install time up to 90%, eliminate ladder and injury risk
- 100% recyclable curtain eliminates laundering
- Receive curtain alerts on overdue and upcoming exchanges via e-mail or secure web app portal
- Enhance inventory management with accurate stock requirement data
- Easy-to-use dashboard analytics provides real-time data that can be used for staff and leadership reporting

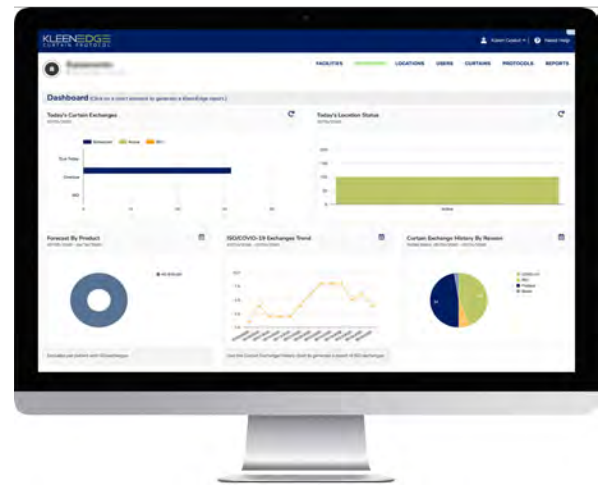


HOW THE SOFTWARE WORKS

The KleenEdge secure software web portal allows users to customize protocols and alerts. Scanned NFC curtain tag data gets delivered back to the web app in real-time. Dashboard analytics provides overview on all exchange activities.



KleenEdge Dashboard provides real-time monitoring of current and overdue exchanges. Historical data provides for ISO and COVID-19 exchange tracking.



Visit [KleenEdge.com](https://www.kleenedge.com) and click  *Play Product Demo* to learn more.



KLEENEDGE BENEFITS

Environmental & Infection Control Managers receive automated reminders and reports to alert on overdue as well as upcoming curtain exchanges. Management are always able to validate protocol to governing agencies such as TJC.

Environmental Services Staff receive exact exchange locations along with curtain sizes & descriptions. A simple scan of the KleenEdge NFC curtain tags eliminates all manual processes of hand-written dates on labels and entries into curtain logs.

Scan tag and tap reason for exchange. All data uploads to the web portal for real-time reporting.

